

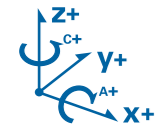
NEW**DATRON Axis5**

Dynamic and Precise 4th and 5th Axis

Precision Meets Flexibility – for Your 5-axis Machining

The DATRON Axis5 expands your machine with a compact, ultra-precise rotary swivel unit for tilted and simultaneous 5-axis machining. It mounts directly into the cut-out section of your DATRON machine using conical centering bushes, integrating seamlessly into your machining environment. Thanks to its compact design, the table can also be used for 3-axis machining—delivering maximum productivity with minimal space requirements.

DATRON Axis5: More flexibility. Maximum precision. Fully integrated.

**Simultaneous 5-axis Machining**

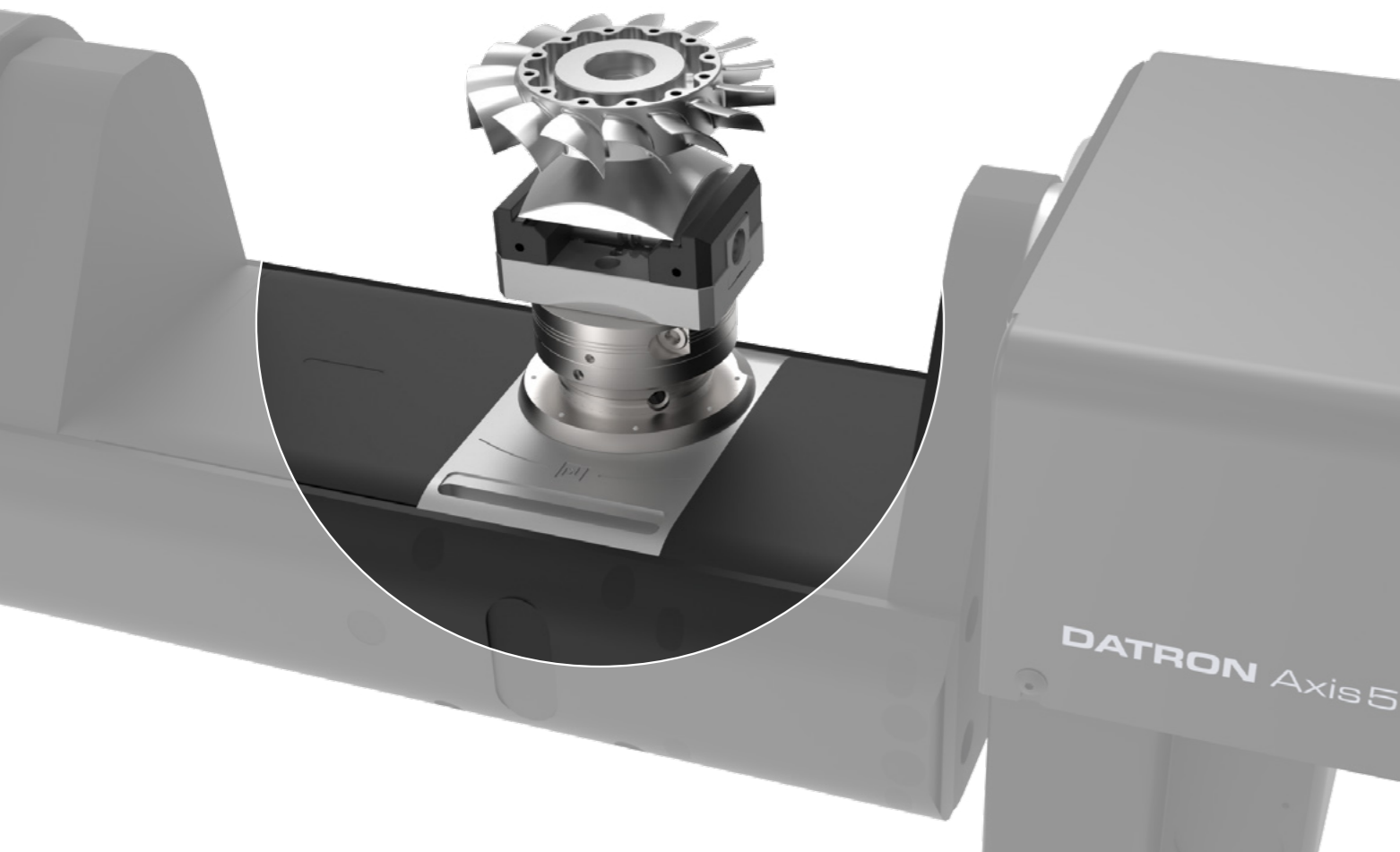
Machine complex geometries precisely and in a single pass—without re-clamping. Achieve maximum efficiency and the highest surface quality.

**RTCP (Rotation Tool Center Point)**

The tool remains precisely on the machining point throughout every movement—delivering consistently accurate results, no matter the angle or position..

**Can Be Automated for Your Production**

Optional integrated rotary feedthroughs make the system perfectly suited for automated clamping, sensor integration, or robotic loading.



We'd be happy to provide you with more information:

+49 6154 63766-0

by email

info@datron.de

or online at

www.datron.de

DATRON AG
Am Innovationsfeld 1
64372 Ober-Ramstadt, Germany

+49 6154 63766-0
info@datron.de
www.datron.de

© 2025 DATRON AG – All rights reserved.
haftungsausschluss.datron.de

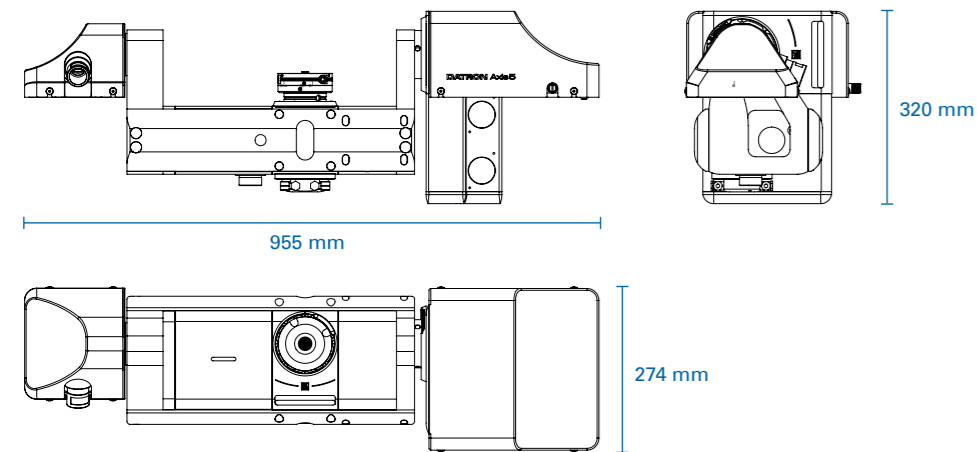
DATRON_Axis5_FL_082025_EN



Get information now!
www.datron.de/datronaxis5



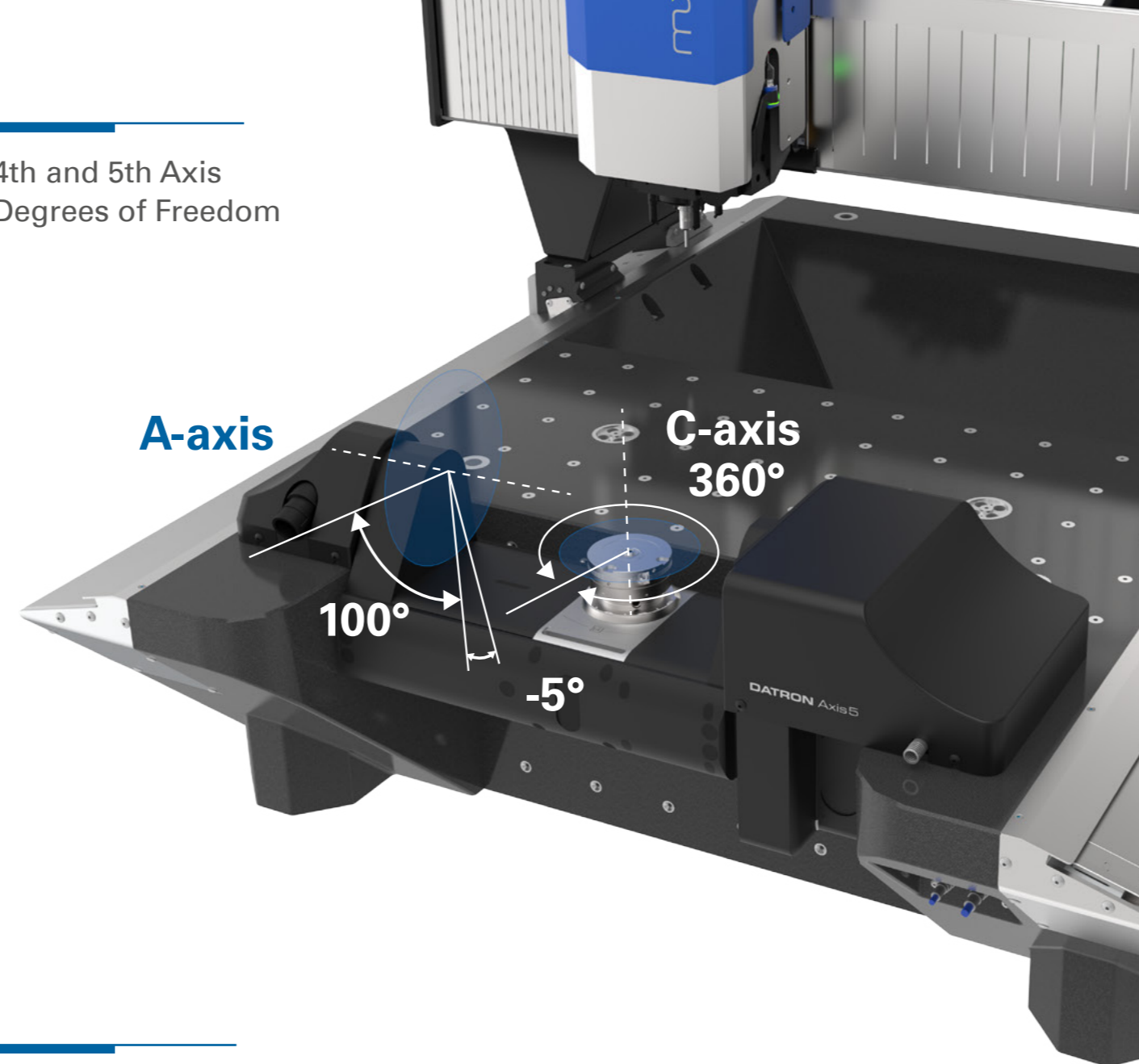
Technical Data



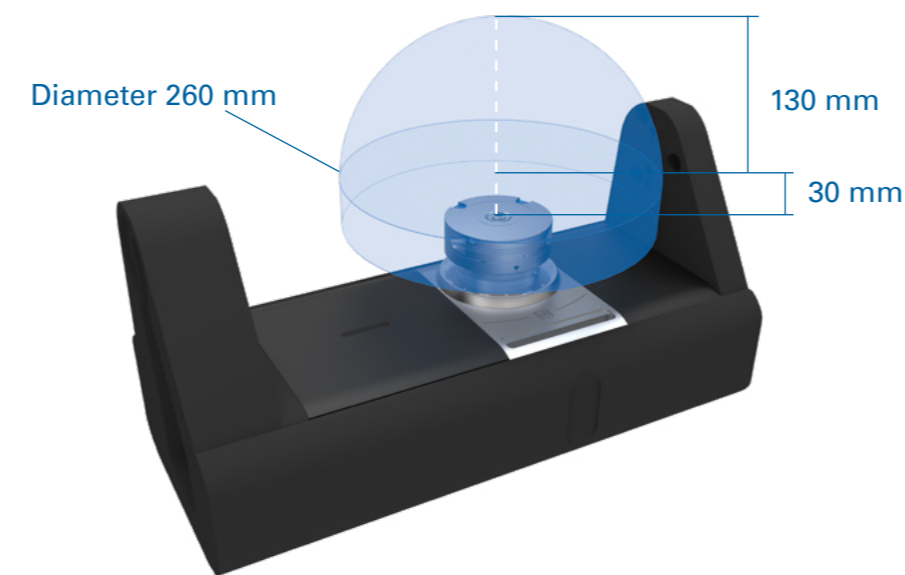
	DATRON Axis5 Basic	DATRON Axis5 Automation	DATRON Axis5 Basic	DATRON Axis5 Automation
Item no.	0A01131J	0A01131K	0A01131J	0A01131K
Compatibility	DATRON M8Cube		DATRON MXCube	
Item no. preparation*	0A01130J		0A01130K	
Interface	SCHUNK NSE-M mini 90-V1	SCHUNK NSE mini 90-V1	SCHUNK NSE-M mini 90-V1	SCHUNK NSE mini 90-V1
Work piece weight (max.)	13 kg (incl. clamping devices)			
Drive	AC-Servomotor - Mavilor BLS 072 EQN 1125, free from backlash/pre-clamped worm gear			
Bearing tilting moment	1200 Nm			
Bearing axial load	6 kN			
Drive feed moment	70 Nm			
Dimensions (XxYxZ)	955 mm x 274 mm x 320 mm			
Weight	approx. 104 kg			
System requirement	DATRON next Software release 3.6 or later			
Scope of delivery	Plug & Produce-compatible 4th and 5th Axis with manual or pneumatic quick change pallet system, calibration ball to determine zero point *machine preparation must be purchased separately			

	A-axis	C-axis
Cycle time 90°	0.6 s	0.4 s
Positioning accuracy	+/-35 arcsec	+/-20 arcsec
Repeat accuracy	+/-3 arcsec	+/-5 arcsec
Speed / rpm	33 rpm	65 rpm
Radial run-out	-	<0.01 mm
Axial run-out	-	<0.01 mm
Rotary range	-5° to +100°	360° (infinite)

4th and 5th Axis Degrees of Freedom

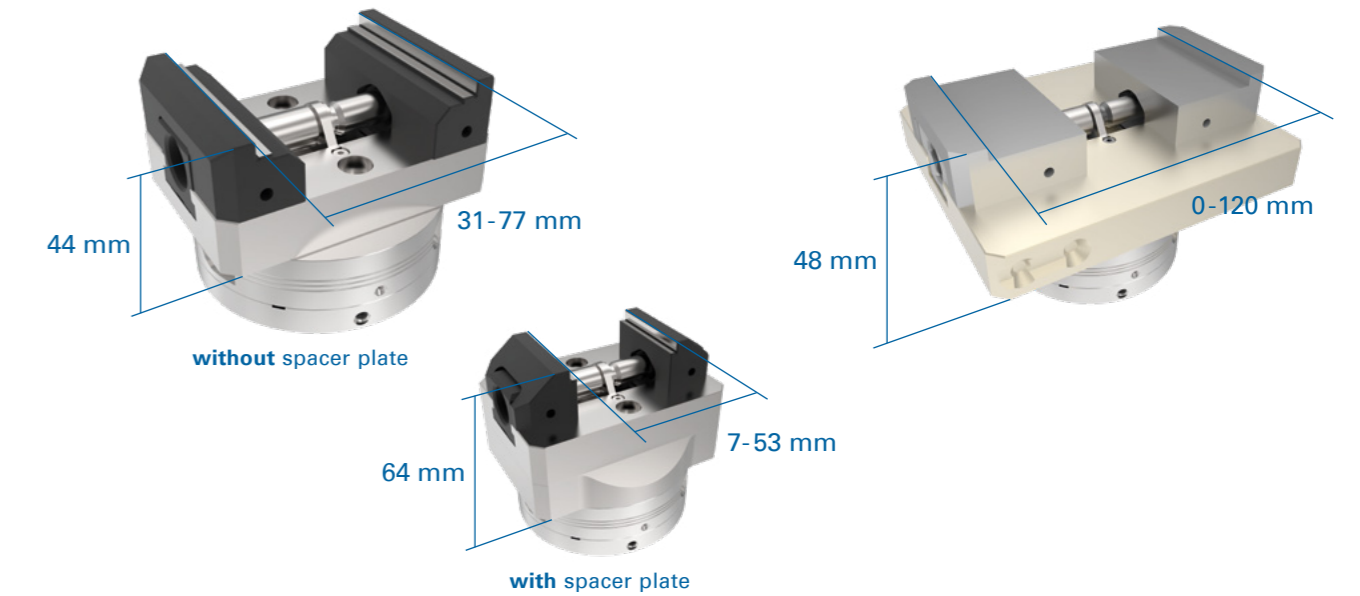


Maximum Component Size for Simultaneous Machining



Quick Change Clamping Devices

Quick-change clamping devices allow workpieces to be secured on the DATRON Axis5 with precision, speed, and repeat accuracy. They minimize setup time while ensuring maximum reliability and consistent clamping accuracy—ideal for demanding production processes with the highest quality requirements.



	DATRON Micro Vice	DATRON Vario Vice 150		
Item no.	0A01088S	0A01088L	0A01088M	A01088N
Jaw width	70 mm	70 mm	120 mm	200 mm
Dimensions incl. jaws (LxWxH)	100x70x44-64 mm (depending on clamping jaw)	150 X 120.4 x 48 mm		
Clamping range	7-77 mm (depending on clamping jaw)	0-50 mm (+milled recess in jaw max. 120 mm)		
Clamping force (max.)	16 kN	5 kN		
Max. torque	50 Nm	15 Nm		
Scope of delivery	DATRON Micro Vice Clamping Jaw Set Spacer plate with Clamping Pins	DATRON Vario Vice 150 2x clamping jaw 70 mm, 120 mm or 200 mm		

Optional Accessories

Quick Change Clamping Devices*	
Item no.	0A01088T

*Mandatory for clamping of all DATRON Vario Vice 150 and customer-specific clamping devices for DATRON Axis5 quick change pallet system.



Online DATRON Accessories Catalog
www.datron.de/accessories-catalogue